

PLANS OF IMPROVEMENTS FOR:

ELLIS HARBOR SIDEWALK REPAIRS PHASE 1

CITY OF CEDAR RAPIDS
LINN COUNTY, IOWA

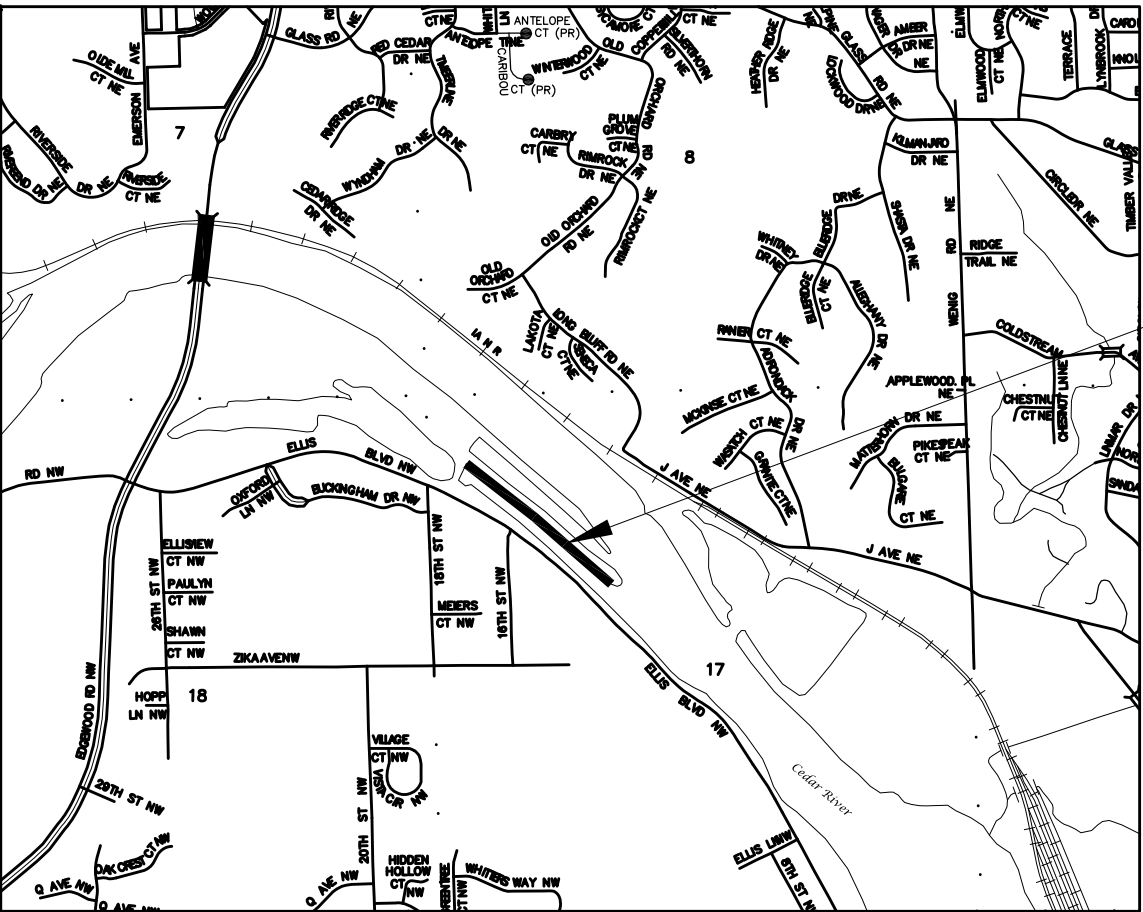


CONTRACT NUMBER PUR1118-104
DESIGN NUMBER PUR0118-117
FUNDING SOURCE 312-312000-312077

INDEX OF SHEETS	
No.	Description
A.01	COVER SHEET
A.02	LEGEND
A.03	PROJECT OVERVIEW MAP
B.01-B.03	STANDARD DETAILS
C.01-C.02	GENERAL NOTES
C.03	ESTIMATE PROJECT QUANTITIES AND ESTIMATE REFERENCE
D.01-D.03	SIDEWALK REPAIR PLAN

CITY OF CEDAR RAPIDS	
THIS ENGINEERING DOCUMENT IS RECOMMENDED FOR FILING WITH THE CITY CLERK	
CITY PARKS DEPARTMENT OR DESIGNEE	DATE

THE PROPOSED IMPROVEMENTS INCLUDED IN THESE DRAWINGS
HAVE BEEN DESIGNED IN ACCORDANCE WITH THE CURRENT
VERSION OF THE CEDAR RAPIDS METROPOLITAN AREA
ENGINEERING DESIGN STANDARDS MANUAL OR SUDAS.



PROJECT LOCATION

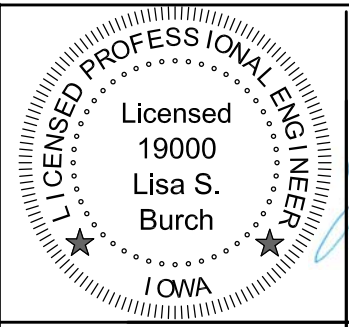


CITY COUNCIL:	
MAYOR:	BRADLEY HART
AT LARGE:	TYLER OLSON
AT LARGE:	ANN POE
AT LARGE:	SUSIE WEINACHT
DISTRICT 1:	MARTIN HOEGER
DISTRICT 2:	SCOTT OVERLAND
DISTRICT 3:	DALE TODD
DISTRICT 4:	SCOTT OLSON
DISTRICT 5:	ASHLEY VANORNY

YTT DESIGN SOLUTIONS
YESTERDAY. TODAY. TOMORROW.

ENGINEER:
YTT DESIGN SOLUTIONS, LLC
LISA BURCH, PE
260 33RD AVENUE SW, SUITE 1
CEDAR RAPIDS, IOWA 52404
PHONE: 319-210-0422
FAX: 319-429-7625
EMAIL: LBURCH@YTTDESIGN.COM

REVISIONS



I hereby certify that this plan was prepared by me or under
my direct personal supervision and that I am a duly licensed
Professional Engineer under the laws of the State of Iowa.

Signature Date

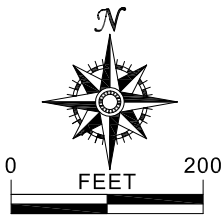
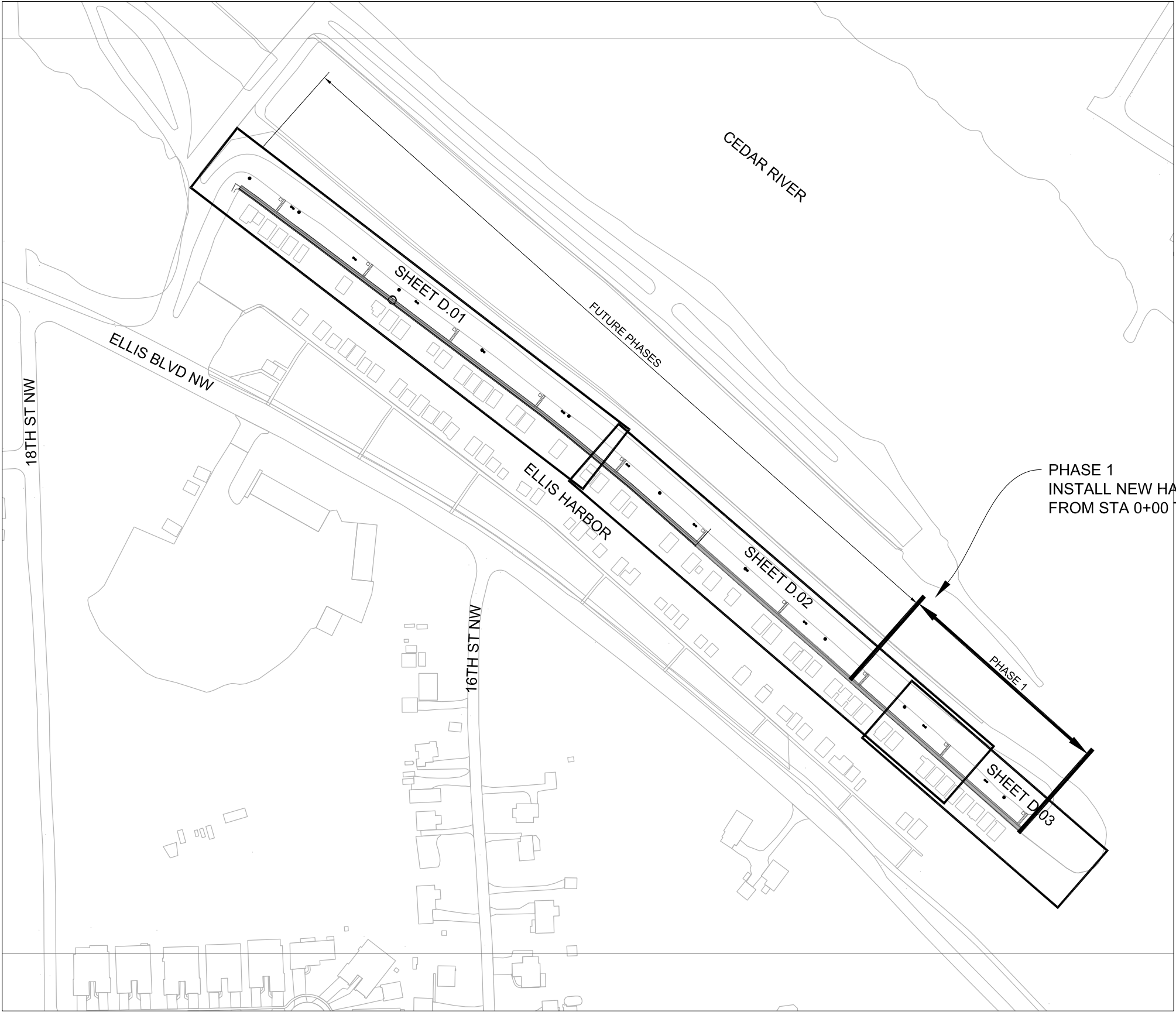
LISA S. BURCH, P.E. Iowa License No. 19000

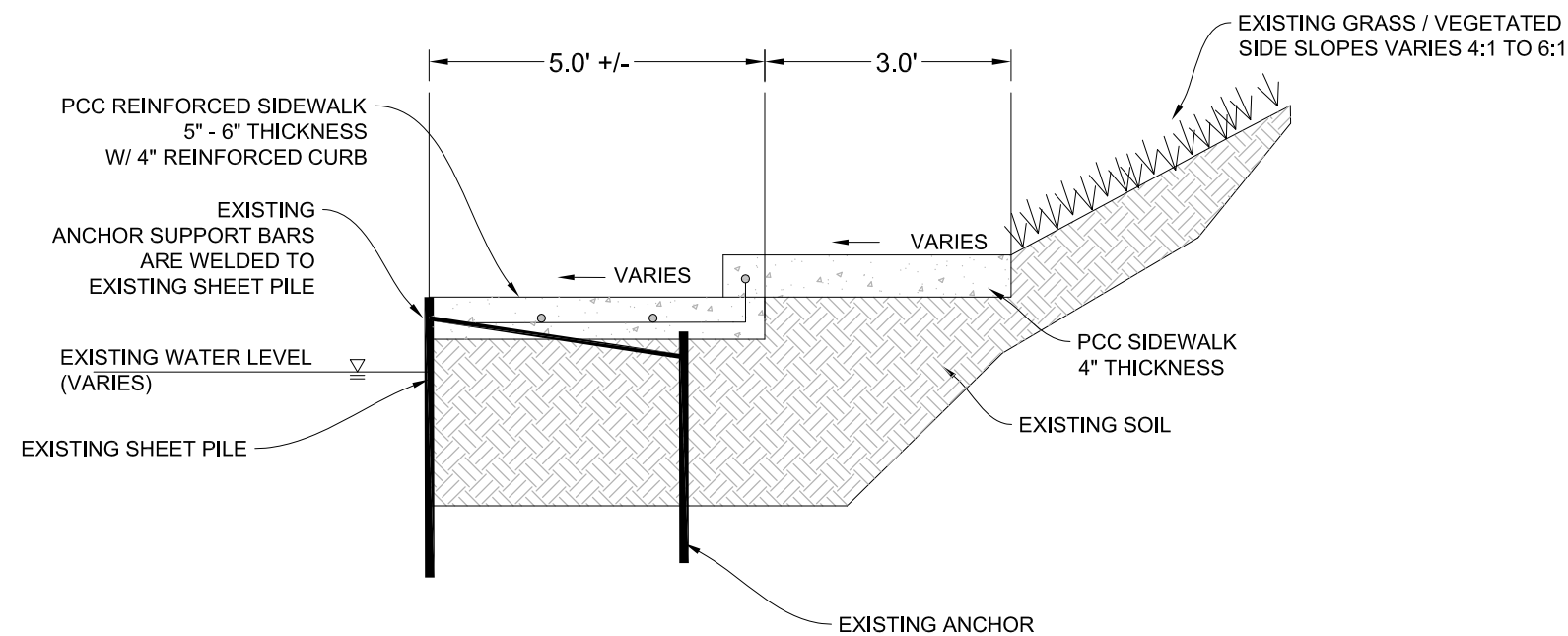
My license renewal date is December 31, 2019

Pages or sheets covered by this seat: ALL

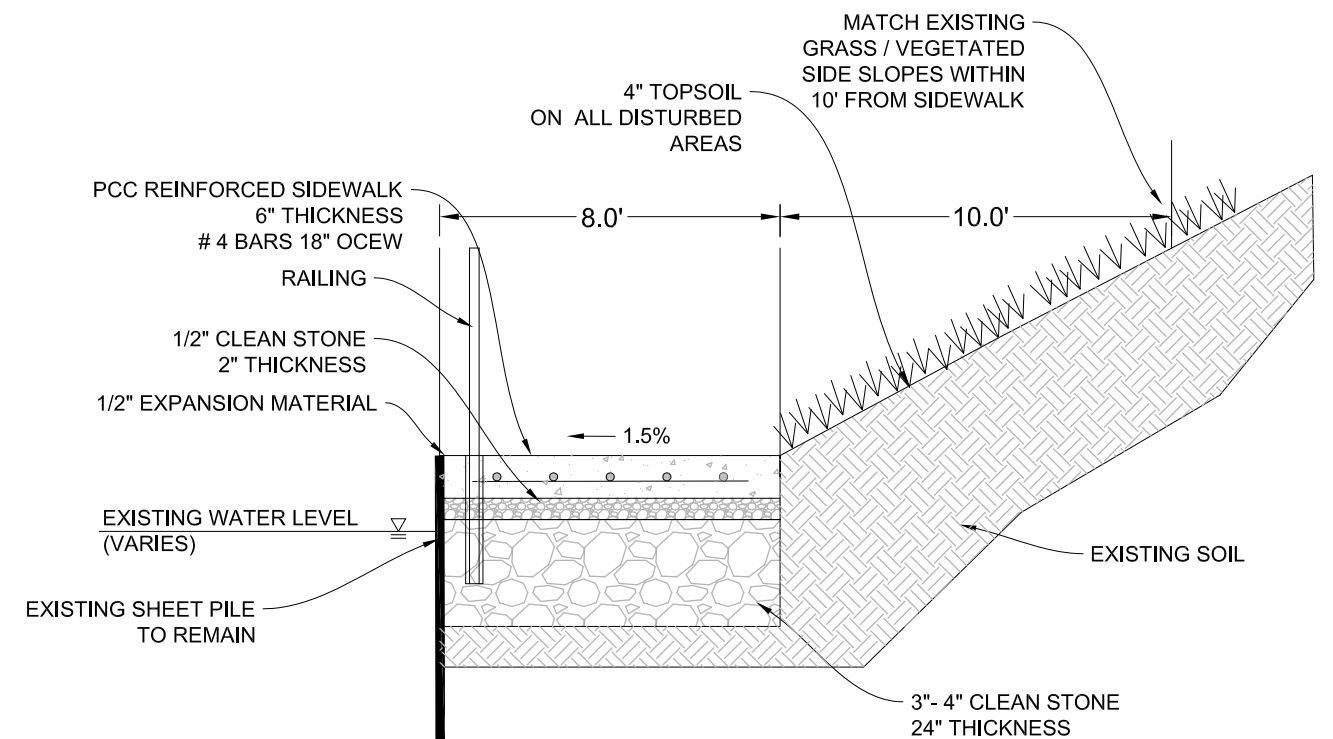
	Interstate Highway Symbol		Fire Hydrant		Guardrail (Beam or Cable)
	U.S. Highway Symbol	WH	Water Hydrant (Rural)	GP	Guard Post (one or two)
	Iowa Highway Symbol	ST	Septic Tank		Guard Post (over two)
	County Road Highway Symbol	C	Cistern	FP	Filler Pipe
A	Evergreen Tree	LP	L.P. Gas Tank (No Footing)	GV	Gas Valve
	Deciduous Tree	UST	Underground Storage Tank	WV	Water Valve
	Fruit Tree		Latrine	SL	Speed Limit Sign
SB	Shrub (Bushes)		Luminaire	MM	Mile Marker Post
	Timber		Traffic Signal	SIGN	Sign
	Hedge		Traffic Signal with Luminaire	WHU	Water Hook Up
	Stump	TP	Telephone Pedestal	RT	Radio Tower
	Swamp	TVP	Television Pedestal	TA	Tower Anchor
	Rock Outcrop		Telephone Pole	EB	Electric Box
	Broken Concrete		Telephone Pole (Second Company)	TCB	Traffic Signal Control Box
	Revetment (Rip Rap)		Telephone Pole (Third Company)	RRB	Rail Road Signal Control Box
	Cemetery		Telephone Pole (Fourth Company)	TSB	Telephone Switch Box
G	Grave		Telephone Pole (Fifth Company)		
CV	Cave		Power Pole		
SH	Sink Hole		Power Pole (Second Company)		
	Board Fence		Power Pole (Third Company)		
	Chain Link Fence		Power Pole (Fourth Company)		
	Barbwire Fence		Power Pole (Fifth Company)		
	Security Fence		Electrical Highline Tower (Metal or Concrete)		
	Woven Fence		Telephone Riser Pole		
	Barbwire and Woven Fence		Power Riser Pole		
	Terrace		Telegraph Pole		
	Earth Dam or Dike (Existing)		Satellite TV Dish		
	Earth Dam or Dike (Proposed)	W	Existing Water Line		
	Tile Outlet	W2	Existing Water Line (Second Company)		
	Edge of Water	San.	Existing Sanitary Sewer Line		
	Existing Drainage	T	Existing Telephone Line		
	Proposed Drainage	T2	Existing Telephone Line (Second Company)		
	Right of Way Rail or Lot Corner	FO	Existing Fiber Optics Telephone Line		
	Concrete Monument	St. S.	Existing Storm Sewer Line		
	Well	G	Existing Gas Line		
	Windmill	G-HP	Existing High Pressure Gas Line		
	Beehive Intake	G2	Existing Gas Line (Second Company)		
	Existing Intake	G2-HP	Existing High Pressure Gas Line (Second Company)		
	Proposed Intake	E	Existing Power Line		
	Existing Utility Access (Manhole)	E2	Existing Power Line (Second Company)		
	Proposed Utility Access (Manhole)	TV	Cable Television Line		

NO.	REVISION DESCRIPTION	APPROVED	DATE

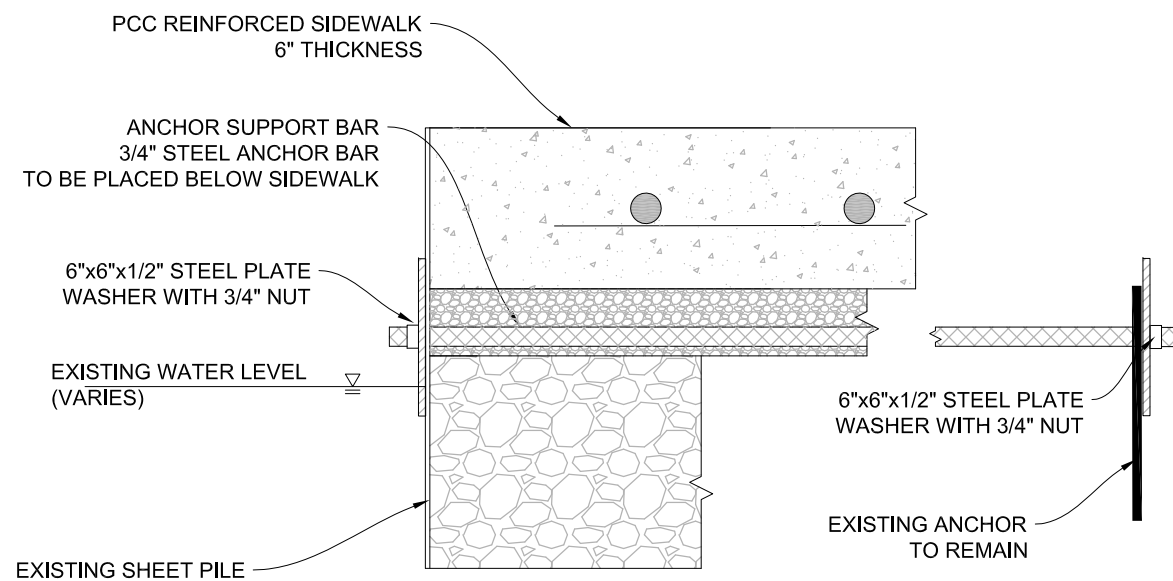




EXISTING HARBOR SIDEWALK
NOT TO SCALE



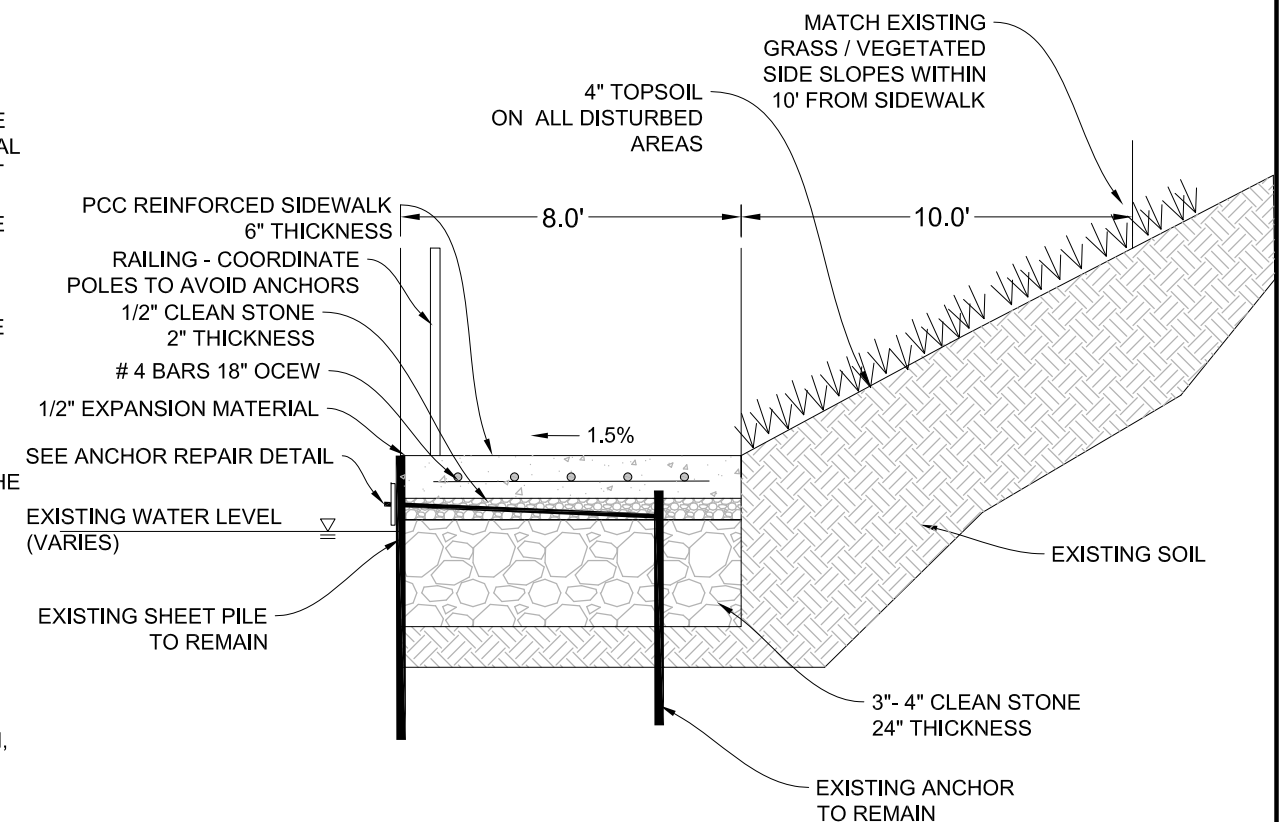
PROPOSED HARBOR SIDEWALK
NOT TO SCALE



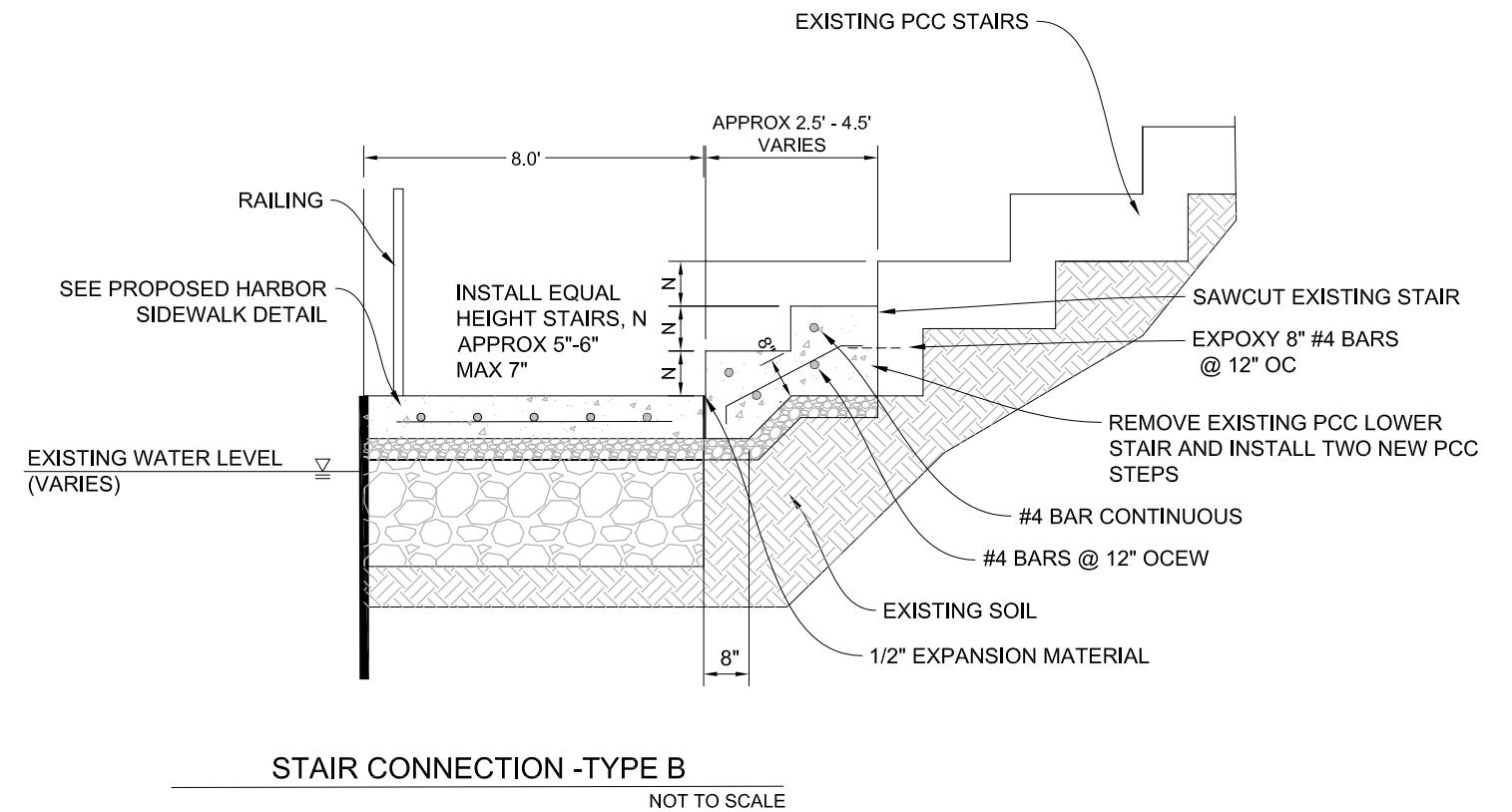
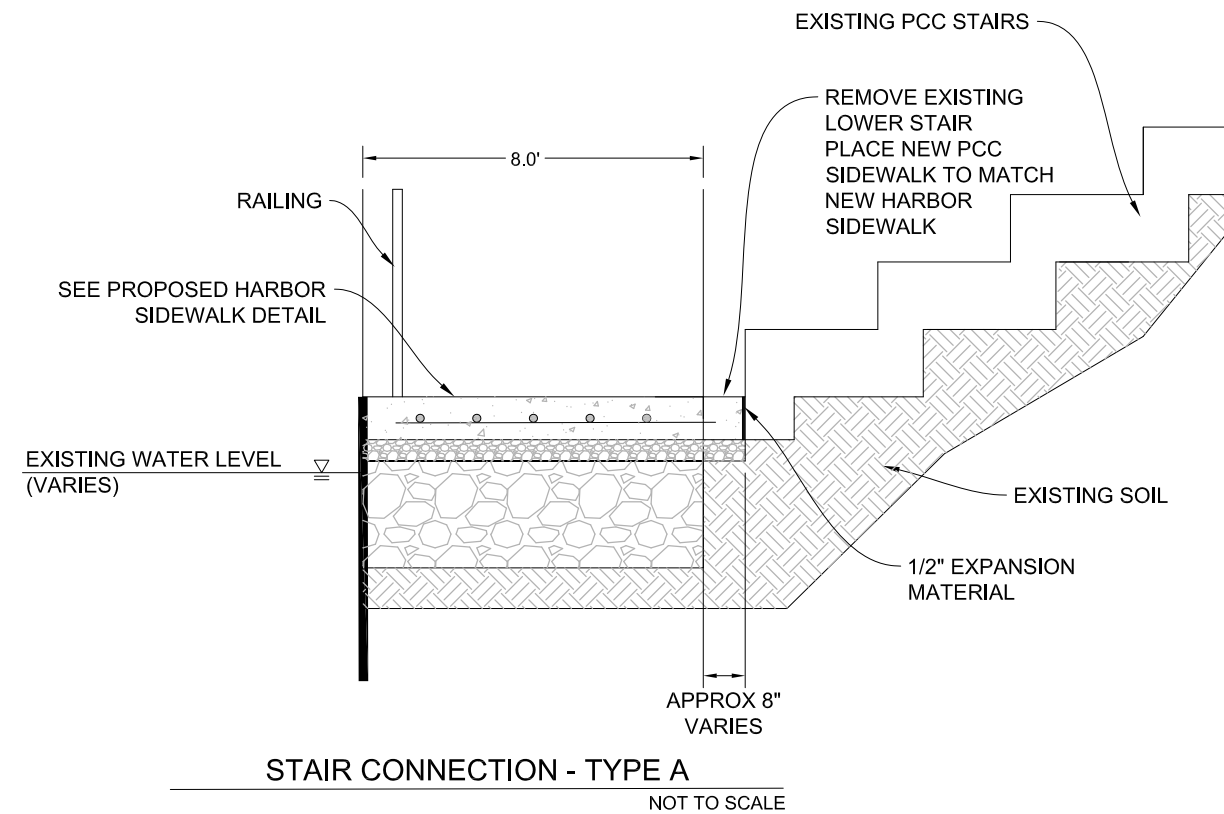
SHEET PILE ANCHOR SYSTEM REPAIR
NOT TO SCALE

NOTES:

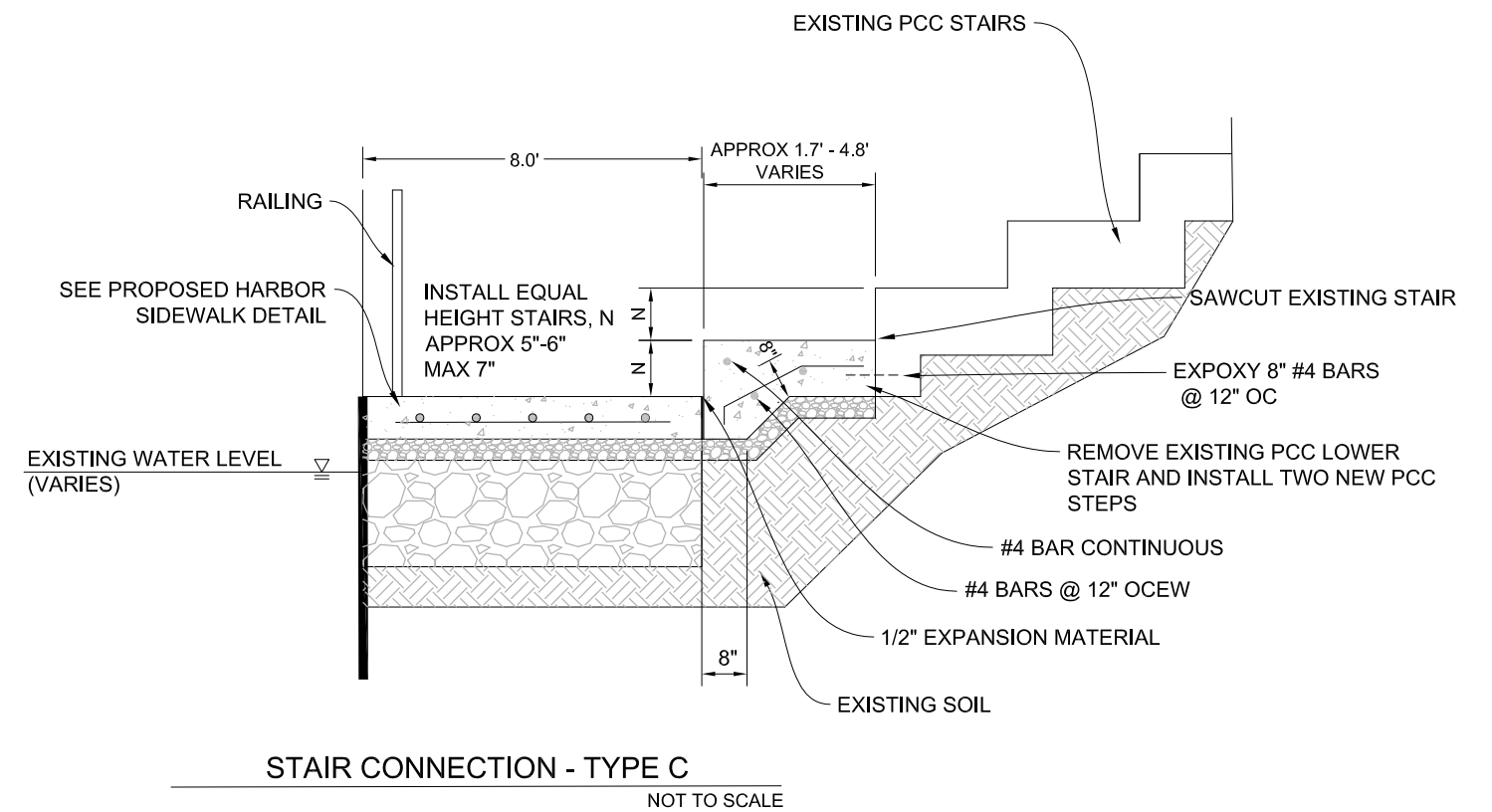
1. SHEET PILE ANCHOR SUPPORT BARS TO BE REMOVED DURING THE PAVEMENT REMOVAL PHASE OF CONSTRUCTION. REPLACEMENT ANCHOR SUPPORTS WILL BE PLACED BELOW THE PCC SIDEWALK PAVEMENT, SEE DETAIL.
2. ANY UNDAMAGED EXISTING ANCHOR SUPPORT BARS LEFT IN PLACE NEED TO BE 2 INCHES BELOW THE PCC PAVEMENT SURFACE.
3. PCC SIDEWALK SHALL BE FLUSH WITH THE TOP OF THE EXISTING SHEET PILE. DUE TO THE SHEET PILE MOVING, THE WIDTH OF THE SIDEWALK WILL NEED TO BE ADJUSTED TO CREATE A STRAIGHT EDGE ON THE GRASS SIDE OF THE WALK.
4. BROOM FINISH SHALL BE APPLIED PERPENDICULAR TO THE LENGTH OF THE SIDEWALK.
5. ALL CONSTRUCTION SHALL MEET THE 2010 ADA STANDARDS FOR ACCESSIBLE DESIGN, DEPARTMENT OF JUSTICE, SEPTEMBER 15, 2010. ALL CONSTRUCTION SHALL FALL WITHIN SPECIFIC MEASUREMENTS AND SLOPES AS SPECIFIED. THERE WILL BE NO FLEXIBILITY IN MEETING THESE REQUIREMENTS.

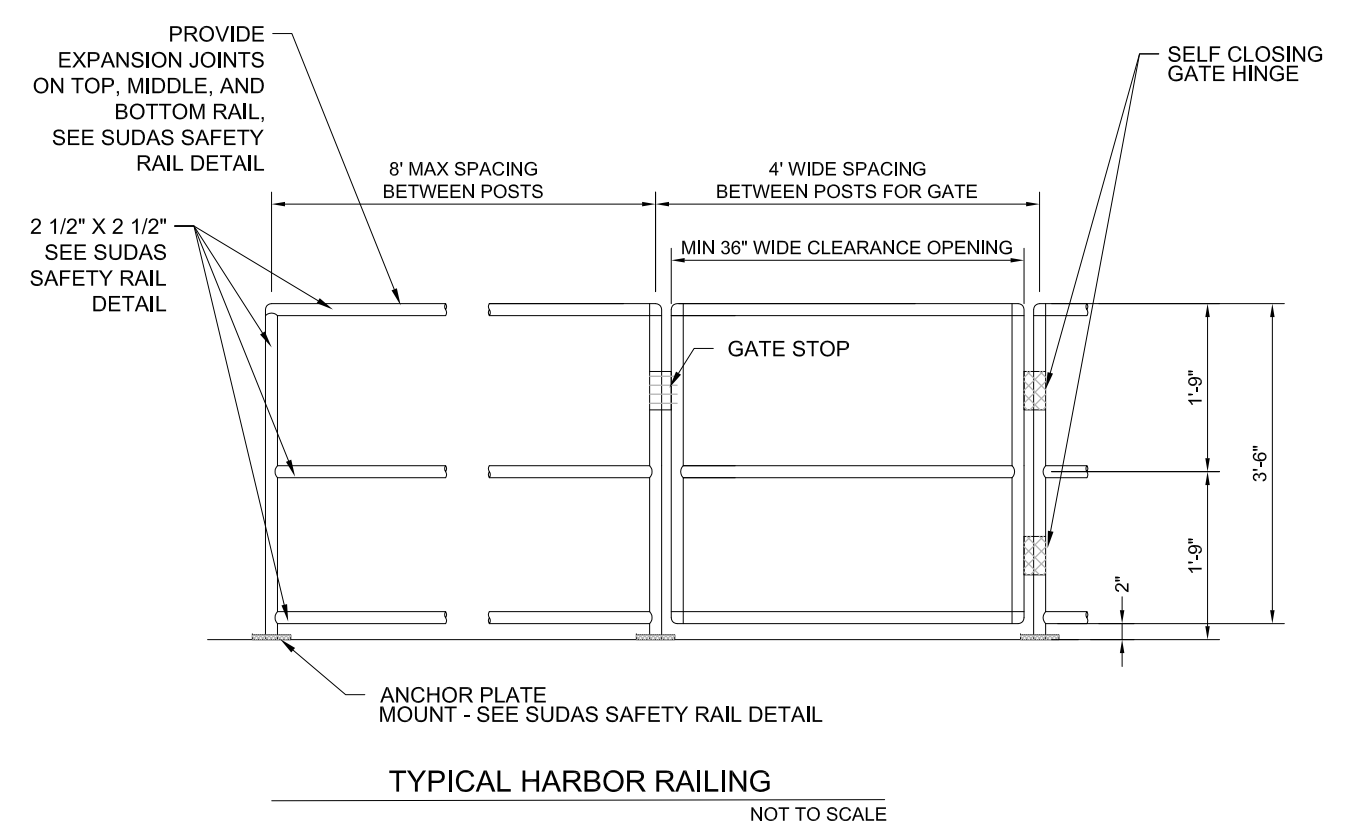


PROPOSED HARBOR SIDEWALK - AREA WITH ANCHORS
NOT TO SCALE

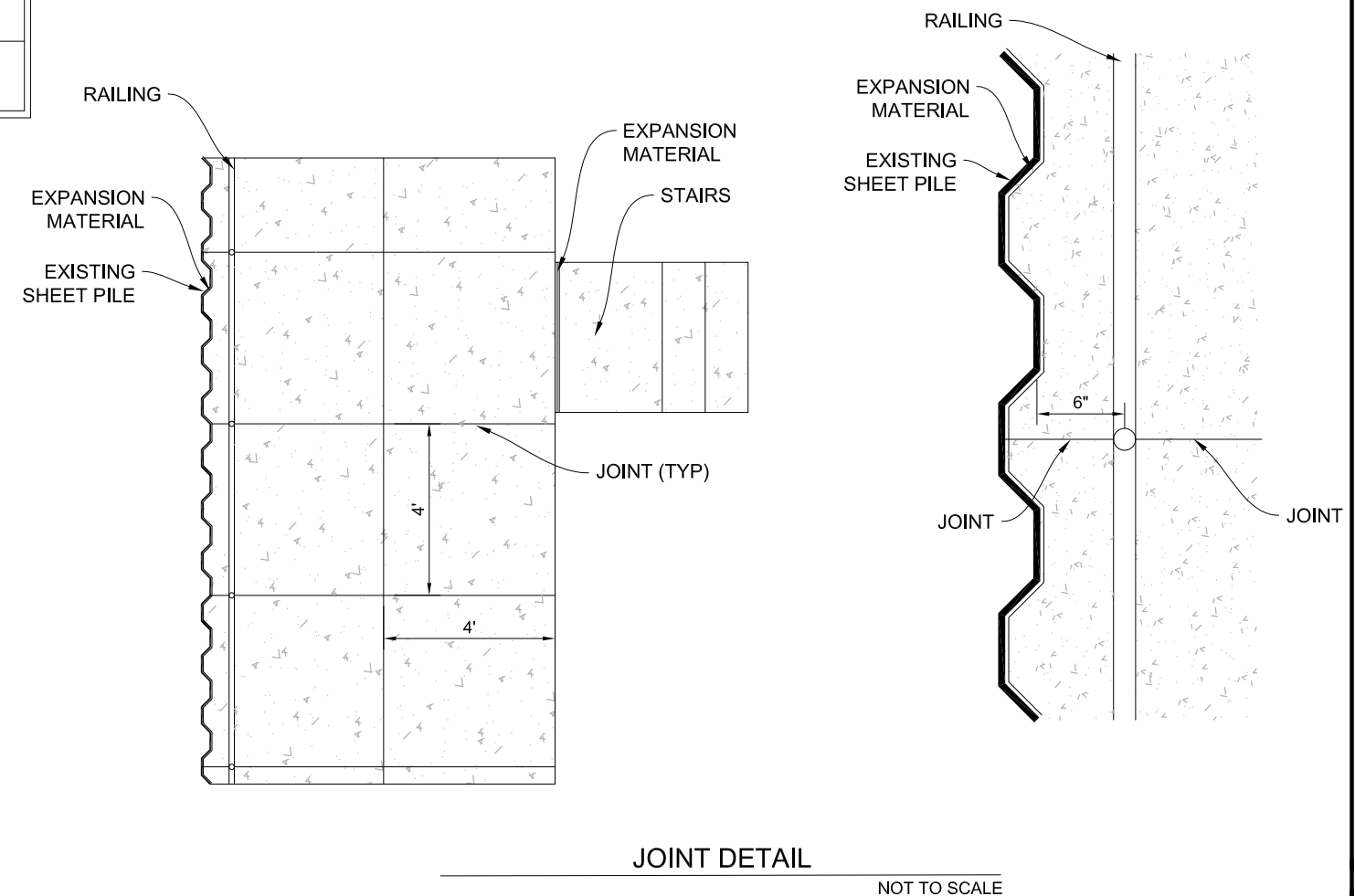


STAIRS		
STAIR LOCATION	STAIR CONNECTION TYPE	NOTES
STA 0 + 08	TYPE A	
STA 1 + 92	TYPE C	
STA 3 + 84	TYPE B	
STA 5 + 76	TYPE C	
STA 7 + 68	TYPE B	
STA 9 + 60	TYPE C	
STA 11 + 42	TYPE B	
STA 13 + 34	TYPE B	
STA 15 + 37	TYPE B	
STA 17 + 20	TYPE B	





1. HARBOR RAILING AND GATES SHALL MEET WITH REQUIREMENTS OF SUDAS SECTION 9080 SAFETY RAIL WITH THE EXCEPTIONS OF INSTALLING A MIDDLE RAILING IN LIEU OF PICKETS, AS NOTED ON THIS SHEET.
 - 1.1. RAILS AND POSTS: PROVIDE 2 1/2 INCH BY 2 1/2 INCH TUBULAR HIGH STRENGTH STEEL WITH 1/4 INCH MINIMUM WALL THICKNESS. COMPLY WITH ASTM A 500, GRADE B.
 - 1.2. FINISH - POWDER COATED: APPLY POWDER COAT TO STEEL. COLOR TO BE DETERMINED BY OWNER. COMPLY WITH THE MANUFACTURER'S RECOMMENDATIONS FOR SURFACE PREPARATION, APPLICATION OF PRIMER, AND APPLICATION OF THE POWDER COATING, IN ADDITION TO THE FOLLOWING MINIMUM REQUIREMENTS.
 - 1.3. RAILING SHALL BE ATTACHED TO CONCRETE SIDEWALK WITH BASE PLATE AND ANCHOR RODS..
3. RAILING GATES SHALL BE INSTALLED AT ALL EXISTING BOAT RAMPS LOCATIONS.
4. THE ANCHORING OF POSTS AND FRAMING OF MEMBERS FOR RAILINGS OF ALL TYPES SHALL BE OF SUCH CONSTRUCTION THAT THE COMPLETED STRUCTURE SHALL BE CAPABLE OF WITHSTANDING A LOAD OF AT LEAST 200 POUNDS APPLIED IN ANY DIRECTION AT ANY POINT ON THE TOP RAIL.
5. ALL CONSTRUCTION SHALL MEET THE 2010 ADA STANDARDS FOR ACCESSIBLE DESIGN, DEPARTMENT OF JUSTICE, SEPTEMBER 15, 2010. ALL CONSTRUCTION SHALL FALL WITHIN SPECIFIC MEASUREMENTS AND SLOPES AS SPECIFIED. THERE WILL BE NO FLEXIBILITY IN MEETING THESE REQUIREMENTS.



UTILITY CONTACTS

City Cedar Rapids
City Arborist: (319) 286-5616
Fire: Business (319) 286-5200, Emergency 911
Police: Business (319) 286-5491, Emergency 911
Public Works: (319) 286-5802
Sanitary & Storm Sewer: (319) 286-5826
Transit: (319) 286-5573
Water: (319) 286-5900
Iowa One Call: 811
Utilities
Alliant: (319) 786-1908
AT&T: (319) 364-6111 (this is an unmanned number, but a message can be left on a machine)
Century Link: (319) 399-7600 or (319) 399-7487
ImOn Communications: (319) 261-4640 or (319) 261-4689
Iowa Network Service: (319) 533-2319
ITC Midwest: (319) 297-6765
Joint Communications Network: (319) 286-5491
Linn County Rec: (319) 377-1587
Mediacom: (319) 395-9699, Ext. 354
Mid American Energy: (319) 298-5162
Windstream: (319) 538-1985

1. REFER TO TABULATION OF UTILITY GRADE LEVELS IN ACCORDANCE WITH C/ASCE 38-02 IN THESE DRAWINGS FOR INFORMATION REGARDING DEPICTION OF EXISTING SUBSURFACE UTILITIES. THE CONTRACTOR MUST VERIFY ACTUAL LOCATIONS IN THE FIELD.
2. IOWA CODE 480, UNDERGROUND FACILITIES INFORMATION, REQUIRES VERBAL NOTICE TO IOWA ONE CALL (1-800-292-8989) NOT LESS THAN 48 HOURS PRIOR TO EXCAVATION, EXCLUDING WEEKENDS AND LEGAL HOLIDAYS.
3. UTILITY LOCATIONS AND DEPTHS WERE PLOTTED FROM INFORMATION FURNISHED BY THE VARIOUS UTILITY COMPANIES AND THEIR ACCURACY SHOULD BE CONSIDERED APPROXIMATE. NO RESPONSIBILITY IS ACCEPTED FOR THE LOCATIONS AS SHOWN OR THAT ALL UTILITY FACILITIES ARE SHOWN.
4. UTILITY LOCATIONS SHOWN IN THE PLANS ARE APPROXIMATE. UNLESS NOTED OTHERWISE, THEY REPRESENT LOCATIONS PRIOR TO ANY UTILITY RELOCATIONS REQUIRED TO ACCOMMODATE PROPOSED CONSTRUCTION. GAS VALVES AND RELATED FIXTURES, TELEPHONE PEDESTALS AND RELATED FIXTURES, UTILITY MANHOLES, POWER POLES, AND STREET LIGHT POLES SHALL BE RELOCATED BY THE UTILITY. THE CONTRACTOR SHALL COOPERATE WITH THE OWNERS OF THESE UTILITIES IN THEIR REMOVAL AND REARRANGEMENT OPERATIONS SO WORK MAY PROGRESS IN A REASONABLE MANNER, DUPLICATION OF REARRANGEMENT WORK MAY BE REDUCED TO A MINIMUM, AND SERVICES RENDERED BY THOSE PARTIES WILL NOT BE UNNECESSARILY INTERRUPTED. WHERE INDICATED IN THE CONTRACT DOCUMENTS, PROVIDE TRAFFIC CONTROL AND COORDINATE SCHEDULING OF UTILITY RELOCATIONS. SCHEDULE UTILITY RELOCATIONS TO AVOID DELAY TO CONTRACTOR OPERATIONS. THE COST FOR LOCATING EXISTING UTILITIES, COORDINATING RELOCATION WORK, PROVIDING TEMPORARY SUPPORTS, AND STAGING CONSTRUCTION TO ACCOMMODATE THE RELOCATION OF UTILITIES IS CONSIDERED INCIDENTAL TO CONSTRUCTION.
5. THE CONTRACTOR IS ADVISED SOME UTILITY COMPANIES HAVE RELOCATED THEIR FACILITIES PRIOR TO THE START OF CONSTRUCTION UNDER THIS CONTRACT. RELOCATED UTILITIES ARE NOTED IN THE DRAWINGS. BEFORE COMMENCING CONSTRUCTION OPERATIONS, THE CONTRACTOR SHALL OBTAIN FROM THE ENGINEER ANY AVAILABLE INFORMATION REGARDING RELOCATED POSITIONS OF UTILITIES WITHIN THE PROJECT LIMITS. WHETHER VARIOUS UTILITIES HAVE BEEN RELOCATED OR REMAIN IN THEIR ORIGINAL LOCATION, IT IS THE RESPONSIBILITY OF THE CONTRACTOR TO DETERMINE THEIR EXACT LOCATION AT THE TIME OF CONSTRUCTION AND TO AVOID DAMAGE THERETO.
6. THERE MAY BE ABANDONED UTILITIES WITHIN THE CONSTRUCTION LIMITS NOT SHOWN ON THESE PLANS. THE CONTRACTOR SHALL CONFIRM SAID UTILITIES ARE ABANDONED. THE CONTRACTOR IS RESPONSIBLE FOR REMOVING THESE LINES AS NECESSARY FOR CONSTRUCTION.
7. CONTRACTOR SHALL CONFIRM ASSUMED DEPTHS OF UTILITIES AND PROTECT THEM AS NECESSARY DURING CONSTRUCTION.
8. CONTRACTOR SHALL VERIFY SANITARY AND STORM SEWER PIPE SIZES AND INVERTS PRIOR TO CONSTRUCTION AND PRIOR TO ORDERING MANHOLES AND/OR PIPE. NO ADDITIONAL PAYMENT SHALL BE MADE TO THE CONTRACTOR FOR MATERIAL THAT IS ORDERED AND DOES NOT MATCH PIPE SIZES AND INVERTS THAT ARE TO BE CONFIRMED PRIOR TO CONSTRUCTION.
9. AT POINTS WHERE THE CONTRACTOR'S OPERATIONS ARE ADJACENT TO FACILITIES OF UTILITY COMPANIES, DAMAGE TO WHICH MIGHT RESULT IN CONSIDERABLE EXPENSE, LOSS, OR INCONVENIENCE, WORK SHALL NOT COMMENCE UNTIL ALL ARRANGEMENTS NECESSARY FOR THE PROTECTION THEREOF HAVE BEEN MADE.
10. IN THE EVENT OF INTERRUPTION OF UTILITY SERVICES AS A RESULT OF ACCIDENTAL BREAKAGE OR AS A RESULT OF BEING EXPOSED OR UNSUPPORTED, THE CONTRACTOR SHALL PROMPTLY NOTIFY THE PROPER AUTHORITY AND SHALL COOPERATE WITH SAID AUTHORITY IN THE RESTORATION OF SERVICE. NO CLAIMS FOR ADDITIONAL COMPENSATION WILL BE ALLOWED TO THE CONTRACTOR FOR ANY INTERFERENCE OR DELAY CAUSED BY SUCH WORK.
11. REPAIR ALL FIELD/DRAIN TILES ENCOUNTERED DURING CONSTRUCTION AS SPECIFIED OR AT A MINIMUM TO ALLOW FLOW USING LIKE MATERIAL IN NEW CONDITION WITH CITY APPROVED CONNECTIONS. THE CONTRACTOR SHALL RECORD EXISTING TYPE, SIZE, LOCATION AND DEPTH OF ALL FIELD/DRAIN TILES ENCOUNTERED AND REPAIRED DURING CONSTRUCTION. PROVIDE DATA TO THE CITY FOR INCORPORATION INTO RECORD DRAWINGS.
12. THE CONTRACTOR SHALL OBTAIN APPROVAL FROM THE ENGINEER FOR ANY VARIANCE FROM THE APPROVED PLAN.

1. INSPECTION WILL BE PROVIDED BY THE CEDAR RAPIDS PARKS AND RECREATION DEPARTMENT. PROVIDE A MINIMUM OF 72 HOURS NOTICE PRIOR TO STARTING CONSTRUCTION.
2. DIMENSIONS, STREET LOCATIONS, UTILITIES AND GRADING ARE BASED ON AVAILABLE INFORMATION AT THE TIME OF DESIGN. DEVIATIONS MAY BE NECESSARY IN THE FIELD. ANY SUCH CHANGES OR CONFLICTS BETWEEN THE PLAN AND FIELD CONDITIONS SHALL BE REPORTED TO THE CITY INSPECTOR.
3. CONFINE ALL CONSTRUCTION ACTIVITY TO THE CONSTRUCTION LIMITS UNLESS OTHERWISE AUTHORIZED BY THE CITY. ALL EASEMENT LIMITS SHALL BE FIELD MARKED AND PROTECTED BY THE CONTRACTOR.
4. DO NOT STORE EQUIPMENT AND/OR MATERIALS WITHIN PUBLIC RIGHT-OF-WAY ON STREETS AND/OR ALLEYS OPEN TO TRAFFIC. CONTRACTOR SHALL PROVIDE AREAS AS NEEDED FOR STORAGE OF EQUIPMENT AND/OR MATERIALS.
5. IF THE CONTRACTOR OBTAINS ADDITIONAL EASEMENTS FOR STORAGE OF EQUIPMENT AND MATERIALS, COPIES OF AGREEMENTS WITH THE PROPERTY OWNERS SHALL BE PROVIDED TO THE CITY.
6. WHERE CONTRACTOR EQUIPMENT IS OPERATED ON ANY PORTION OF THE PAVEMENT OR STRUCTURES USED BY TRAFFIC ON OR ADJACENT TO THE SECTION UNDER CONSTRUCTION, THE CONTRACTOR SHALL CLEAN THE PAVEMENT OF ALL DIRT AND DEBRIS AT THE END OF EACH DAY'S OPERATIONS, AND AT OTHER TIMES AS DIRECTED BY THE ENGINEER.
7. THE CONTRACTOR IS RESPONSIBLE FOR ALL SITE SAFETY INCLUDING FENCING AND SIGNAGE ON SITE AND SHALL COMPLY WITH ALL STATE, LOCAL AND FEDERAL REGULATIONS.
8. THE CONTRACTOR SHALL COMPLY WITH ALL STATE REGULATIONS REGARDING AIR, WATER AND NOISE POLLUTION.
9. WHERE SECTION OR SUBSECTION MONUMENTS, BENCHMARKS, RIGHT-OF-WAY PINS, OR IRON PIPE MONUMENTS ARE ENCOUNTERED, THE CITY SHALL BE NOTIFIED BEFORE SUCH MONUMENTS ARE REMOVED OR DISTURBED. THE CONTRACTOR SHALL PROTECT AND CAREFULLY PRESERVE ALL MONUMENTS UNTIL THE CITY AND AUTHORIZED SURVEYOR, OR AGENT, HAS WITNESSED OR OTHERWISE REFERENCED THEIR LOCATION. THE CONTRACTOR WILL BE RESPONSIBLE FOR HAVING AN AUTHORIZED SURVEYOR RE-ESTABLISH ANY MONUMENTS UNNECESSARILY DESTROYED BY CONTRACT OPERATIONS.
10. FULL DEPTH SAW CUT EXISTING PAVEMENTS PRIOR TO REMOVALS. THIS IS INCIDENTAL TO REMOVALS PAY ITEMS.
11. REMOVE EXISTING PAVEMENT TO THE NEAREST JOINT OR AS DIRECTED BY THE ENGINEER.
12. PROTECT EXISTING FACILITIES, TREES AND OTHER APPURTENANCES NOT TO BE REMOVED FROM THE SITE DURING CONSTRUCTION.
13. COORDINATE CONSTRUCTION TO MINIMIZE DISRUPTIONS TO THE ADJACENT PROPERTIES. REPAIR AND RESTORE ANY AREAS DISTURBED BY CONSTRUCTION OUTSIDE OF THE CONSTRUCTION LIMITS AT THE CONTRACTOR'S EXPENSE.
14. DURING CONSTRUCTION, USE ALL MEANS NECESSARY TO CONTROL DUST SPREADING FROM WORK AND STAGING AREAS. DUST CONTROL MEASURES SHALL BE IN ACCORDANCE WITH APPLICABLE SPECIFICATIONS, OR APPROVED BY THE ENGINEER. DUST CONTROL MEASURES ARE CONSIDERED INCIDENTAL.
15. THE CONTRACTOR SHALL ASSIST THE CITY'S INSPECTOR WITH DAILY RECORD KEEPING INCLUDING DOCUMENTING ALL NECESSARY FIELD LOCATIONS AND MEASUREMENTS. THE CONTRACTOR IS REQUIRED TO ATTEND FINAL AND INTERMEDIATE INSPECTIONS OF THE PROJECT AND IS RESPONSIBLE FOR OPENING ALL MANHOLES FOR INSPECTION.
16. CONTRACTOR SHALL COORDINATE THE CONSTRUCTION SCHEDULE WITH CITY STAFF TO AVOID CONFLICTS WITH CITY EVENTS. NO ADDITIONAL COMPENSATION WILL BE MADE FOR COORDINATING SCHEDULES AROUND EVENTS.

UNDERGROUND UTILITY DATA

THESE DESIGN DRAWINGS INCORPORATE UNDERGROUND UTILITY INFORMATION BASED UPON SUBSURFACE UTILITY ENGINEERING PRACTICES AND STANDARD GUIDELINES FOR THE COLLECTION AND DEPICTION OF EXISTING SUBSURFACE UTILITY DATA (CI/ASCE 38-02).

UTILITY QUALITY LEVEL A: PRECISE HORIZONTAL AND VERTICAL LOCATION OF UTILITIES OBTAINED BY THE ACTUAL EXPOSURE (OR VERIFICATION OF PREVIOUSLY EXPOSED AND SURVEYED UTILITIES) AND SUBSEQUENT MEASUREMENT OF SUBSURFACE UTILITIES, USUALLY AT A SPECIFIC POINT. MINIMALLY INTRUSIVE EXCAVATION EQUIPMENT IS TYPICALLY USED TO MINIMIZE THE POTENTIAL FOR UTILITY DAMAGE. A PRECISE HORIZONTAL AND VERTICAL LOCATION, AS WELL AS OTHER UTILITY ATTRIBUTES, IS SHOWN ON PLAN DOCUMENTS. ACCURACY IS TYPICALLY SET TO 15-MM VERTICAL AND TO APPLICABLE HORIZONTAL SURVEY AND MAPPING ACCURACY AS DEFINED OR EXPECTED BY THE PROJECT OWNER.

UTILITY QUALITY LEVEL B: INFORMATION OBTAINED THROUGH THE APPLICATION OF APPROPRIATE SURFACE GEOPHYSICAL METHODS TO DETERMINE THE EXISTENCE AND APPROXIMATE HORIZONTAL POSITION OF SUBSURFACE UTILITIES. QUALITY LEVEL B DATA SHOULD BE REPRODUCIBLE BY SURFACE GEOPHYSICS AT ANY POINT OF THEIR DEPICTION. THIS INFORMATION IS SURVEYED TO APPLICABLE TOLERANCES DEFINED BY THE PROJECT AND REDUCED ONTO PLAN DOCUMENTS.

UTILITY QUALITY LEVEL C: INFORMATION OBTAINED BY SURVEYING AND PLOTTING VISIBLE ABOVE-GROUND UTILITY FEATURES AND BY USING PROFESSIONAL JUDGMENT IN CORRELATING THIS INFORMATION TO QUALITY LEVEL D INFORMATION.

UTILITY QUALITY LEVEL D: INFORMATION DERIVED FROM EXISTING RECORDS OR ORAL RECOLLECTIONS.

TABLE OF QUALITY LEVEL OF UTILITY INVESTIGATION IN ACCORDANCE WITH CI/ASCE 38-02

<u>UTILITY LEVEL</u>	<u>OWNER</u>	<u>QUALITY</u>
TELEPHONE DUCTS (UNDERGROUND)	VARIOUS	D
STREET LIGHT POLES	VARIOUS	D
UNDERGROUND POWER	VARIOUS	D
FIBER OPTIC	VARIOUS	D
EXISTING SANITARY AND STORM SEWER	CITY OF CEDAR RAPIDS	D
EXISTING WATER MAIN	CITY OF CEDAR RAPIDS	D
GAS MAIN	VARIOUS	D
EXISTING TRAFFIC SIGNAL FIXTURES	CITY OF CEDAR RAPIDS	D
EXISTING TRAFFIC SIGNAL CONDUITS	CITY OF CEDAR RAPIDS	D
CABLE TV	VARIOUS	D
JOINT COMMUNICATIONS NETWORK	CITY OF CEDAR RAPIDS	D

PROPERTY OWNER ACCESS NOTES

1. THE CONTRACTOR SHALL COORDINATE OR MAKE ACCOMMODATIONS IN THE CONSTRUCTION AREA FOR EMERGENCY VEHICLE ACCESS.
2. NOTIFICATION (DOOR HANGERS) SHALL BE APPROVED BY THE PARKS AND RECREATION DEPARTMENT PRIOR TO DISTRIBUTION. THE CONTRACTOR SHALL NOTIFY ALL PROPERTY OWNERS AND RESIDENTS A MINIMUM OF ONE WEEK (BUT NOT MORE THAN TWO WEEKS) PRIOR TO COMMENCING CONSTRUCTION. WORK WILL NOT BEGIN UNLESS NOTIFICATION HAS BEEN PROVIDED IN ACCORDANCE WITH THESE CONTRACT DOCUMENTS. DOOR HANGERS SHALL INCLUDE THE FOLLOWING INFORMATION:
 - CONTRACTOR'S NAME AND EMERGENCY CONTACT NUMBERS
 - DESCRIPTION OF CONTRACTOR'S ACTIVITIES
 - DATE OF CONSTRUCTION ACTIVITIES IN THE AREA
 - ESTIMATED DURATION OF CONSTRUCTION ACTIVITIES IN THE AREA
 - DESCRIPTION/LOCATION OF AVAILABLE RESIDENTIAL PARKING
 - INFORMATION STATING HOW AND WHERE GARBAGE COLLECTION WILL BE MADE (NOTE: CONTRACTOR SHALL NOT REQUIRE/REQUEST RESIDENTS TO SET OUT GARBAGE AT LOCATIONS WHICH MAY CAUSE UNDUE HARDSHIPS)

SURFACE RESTORATION NOTES

1. DISTURBED AREAS NOT PAVED OR HARD SURFACED SHALL RECEIVE A MINIMUM OF 6 INCHES OF TOPSOIL. SCARIFY AREAS TO RECEIVE TOPSOIL TO A DEPTH OF 3". REMOVE ALL STONES, WOOD AND DEBRIS LARGER THAN 2 INCHES FROM AREAS TO RECEIVE TOPSOIL. DO NOT COMPACT TOPSOIL.
2. ALL DISTURBED AREAS SHALL BE SEEDED, FERTILIZED AND MULCHED IN ACCORDANCE WITH THE CEDAR RAPIDS METROPOLITAN AREA STANDARD SPECIFICATIONS FOR PUBLIC IMPROVEMENTS.
3. APPLY SEED AT THE RATES INDICATED IN SECTION 02900 OF THE CEDAR RAPIDS METROPOLITAN AREA STANDARD SPECIFICATIONS FOR PUBLIC IMPROVEMENTS.
4. ALL SEEDED AREAS SHALL BE MULCHED PER THE CEDAR RAPIDS METROPOLITAN AREA STANDARD SPECIFICATIONS FOR PUBLIC IMPROVEMENTS.
5. MAINTAIN SEEDED AREAS UNTIL AN ADEQUATE STAND OF GRASS HAS BEEN ESTABLISHED. RESEED ANY AREAS AS NECESSARY DURING MAINTENANCE PERIOD.
6. EXISTING FACILITIES (CURBS, PAVEMENT, UTILITIES, ETC.) THAT ARE TO REMAIN AND DAMAGED BY THE CONTRACTOR SHALL BE REPAIRED OR REPLACED BY THE CONTRACTOR AT NO ADDITIONAL EXPENSE TO THE OWNER.

EROSION CONTROL NOTES

1. THE CONTRACTOR IS RESPONSIBLE FOR COMPLIANCE WITH ALL POTENTIAL POLLUTION AND SOIL EROSION CONTROL REQUIREMENTS OF THE IOWA CODE, THE IOWA DEPARTMENT OF NATURAL RESOURCES (IDNR) NPDES PERMIT, THE U.S. CLEAN WATER ACT, AND ANY LOCAL ORDINANCES.
2. THE CONTRACTOR SHALL PROVIDE EROSION CONTROL MEASURES NECESSARY TO PROTECT AGAINST SILTATION, EROSION AND DUST POLLUTION WITHIN THE THE CONTRACTOR SHALL INCORPORATE ALL EROSION CONTROL FEATURES INTO THE PROJECT PRIOR TO DISTURBING THE SOIL.
3. THE CONTRACTOR SHALL BE RESPONSIBLE TO INSPECT THE TEMPORARY EROSION AND SEDIMENT CONTROL MEASURES A MINIMUM OF ONCE PER WEEK AND WITHIN 24 HOURS FOLLOWING A RAINFALL OF INCH OR MORE. IF A CONTROL MEASURE HAS BEEN REDUCED IN CAPACITY BY 50% OR MORE, THE CONTRACTOR SHALL RESTORE SUCH FEATURES TO THEIR ORIGINAL CONDITION IMMEDIATELY, WEATHER PERMITTING.
4. ERECT SILT FENCE AS SHOWN ON THE PLANS TO LIMIT LOSS OF MATERIAL FROM THE SITE. DEVICES TO REMAIN IN PLACE AND TO BE MAINTAINED UNTIL A PERMANENT GROUND COVER IS ESTABLISHED.
5. MINIMIZE SOIL EROSION BY MAINTAINING ALL EXISTING VEGETATIVE GROWTH WITHIN THE GRADING LIMITS FOR AS LONG AS PRACTICAL.
6. INSTALL A SILT FENCE AROUND ALL STOCKPILED TOPSOIL.
7. THE CONTRACTOR SHALL PROVIDE TEMPORARY SEEDING FOR ALL AREAS THAT ARE DISTURBED AND OPERATIONS WILL NOT COMMENCE OR PERMANENT SEEDING WILL BE BE COMPLETED IN LESS THAN 14 DAYS.
8. SEQUENCE OF EROSION AND SEDIMENT CONTROL EVENTS:
 - 8.1. INSTALL THE STABILIZED CONSTRUCTION ENTRANCE PRIOR TO BEGINNING ANY EARTH DISTURBING OPERATIONS.
 - 8.2. INSTALL PERIMETER SILT FENCE OR 12 INCH DIAMETER FILTER SOCK AS INDICATED IN THE PLANS PRIOR TO BEGINNING ANY EARTH DISTURBING OPERATIONS.
 - 8.3. CONSTRUCT DETENTION BASIN AND OUTLET STRUCTURE AND INSTALL TEMPORARY EROSIONCONTROL AT THE BASIN OUTLET STRUCTURE. UTILIZE THE BASIN AS SEDIMENTATION BASIN DURINGTHE DURATION OF THE PROJECT.
 - 8.4. INSTALL SILT FENCE OR 12 INCH DIAMETER FILTER SOCKS ON DOWN SLOPE SIDES OF STOCKPILE AREA. APPLY TEMPORARY SEEDING TO ALL TOPSOIL OR EXCESS SOIL STOCKPILES.
 - 8.5. IMMEDIATELY AFTER EACH NEW STORM SEWER INTAKE IS CONSTRUCTED, THE CONTRACTOR SHALL INSTALL TEMPORARY SEDIMENT CONTROLS AT THE NEW INTAKE AS INDICATED IN THE PLANS. THE CONTRACTOR SHALL USE THE LOW AREA AROUND EACH PROTECTED INTAKE AS A TEMPORARY SEDIMENTATION BASIN DURING CONSTRUCTION. GEOTEXTILE FABRIC PROTECTION MAY BE USED AS LONG AS IT EFFECTIVELY PROHIBITS SEDIMENT FROM ENTERING THE INTAKES.
 - 8.6. INSTALL STONE SUBBASE ON BUILDING, PARKING, DOCK, AND DRIVE AREA FOLLOWING COMPLETION OF GRADING.
 - 8.7. APPLY TEMPORARY SEEDING TO ALL CLEARED AREAS WHERE CONSTRUCTION ACTIVITY TEMPORARILYCEASES FOR 14 DAYS OR MORE. FERTILIZE AND LIME IF NEEDED. APPLY MULCH ON SLOPES GREATER THAN 4:1.
 - 8.8. DESTROY TEMPORARY SEEDING AND APPLY PERMANENT SEEDING TO ALL DISTRUBED AREAS NOT TO
 - 8.9. BE HARD SURFACED. FERTILIZE AND MULCH PERMANENT SEEDING AS REQUIRED. APPLY MULCH AT 1.5 TO 2.0 TONS PER ACRE ON SLOPES GREATER THAN 4:1.
 - 8.10. WHEN CONSTRUCTION IS COMPLETE AND THE SITE AND CONTRIBUTING OFF-SITE DRAINAGE AREAS ARE FULLY STABILIZED WITH HARD SURFACING AND PERMANENT SEEDING, REMOVE ACCUMULATED SEDIMENT FROM ANY SEDIMENT BASINS, REMOVE SILT FENCE / FILTER SOCK, REMOVE TEMPORARY EROSION CONTROLS AT STORM INTAKES, REMOVE TEMPORARY EROSION CONTROLS AT BASIN OUTLET STRUCTURE, AND RESEED ANY AREAS DISTURBED BY THE REMOVALS.

CEDAR RAPIDS METRO STANDARDS

<u>NUMBER</u>	<u>NAME</u>
1200-011	HEIGHT AND LATERAL LOCATIONS OF TEMPORARY CONSTRUCTION SIGNS TYPICAL INSTALLATION
1200-020	REGULATORY AND GUIDE SIGNS USED IN CONSTRUCTION
1200-021	WARNING SIGNS USED IN CONSTRUCTION
1200-023	BARRICADES AND CHANNELIZING DEVICES
1300-020	SILT FENCE
2700-112	TYPICAL SIDEWALK AND RIGHT-OF-WAY GRADING
2700-113	STANDARD PEDESTRIAN RAMP
2700-200	GENERAL FEATURES OF AN ACCESSIBLE SIDEWALK
2700-201	GENERAL SIDEWALK AND CURB RAMP DETAILS
2700-202	STANDARD CURB RAMPS OUTSIDE OF INTERSECTION RADIUS
2700-206	DETECTABLE WARNING PLACEMENT

DRAWN BY: <u>JOE DIGMAN</u>	APPROVED BY: <u>LISA BURCH</u>
DATE: <u>2/28/19</u>	FILE: <u>Y:\PROJECTS\4918.012\YTT - SHEETS.DWG</u>

NO.	REVISION DESCRIPTION	APPROVED	DATE



YTT DESIGN SOLUTIONS
YESTERDAY. TODAY. TOMORROW.

ELLIS HARBOR
SIDEWALK REPAIRS
CEDAR RAPIDS, IOWA

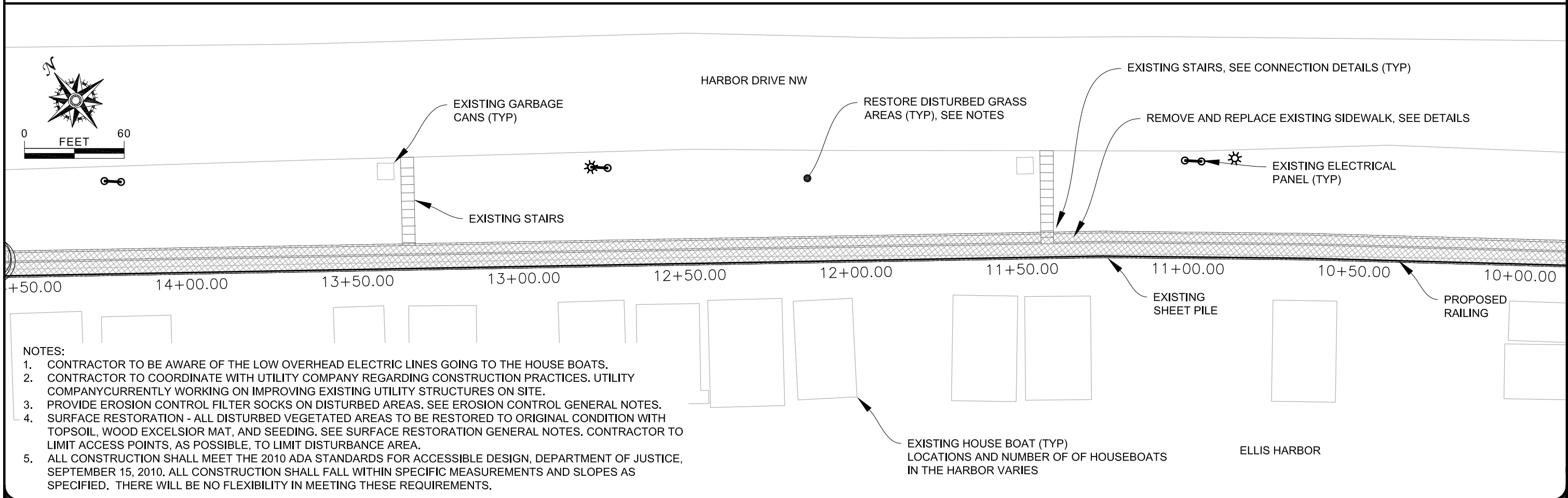
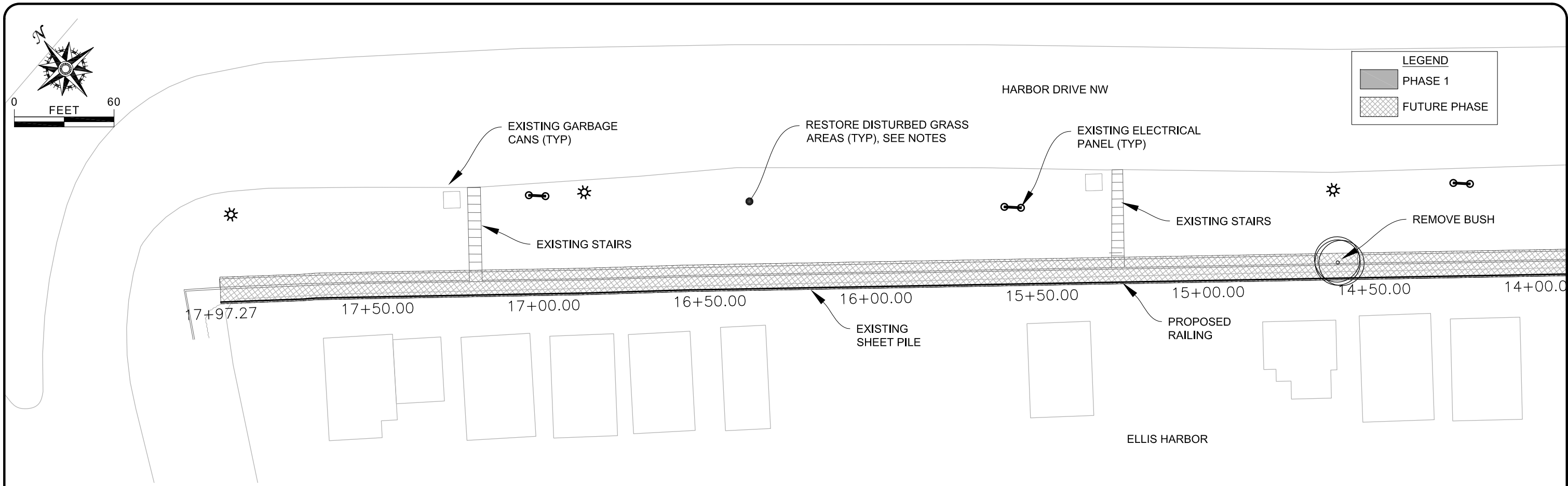
GENERAL NOTES

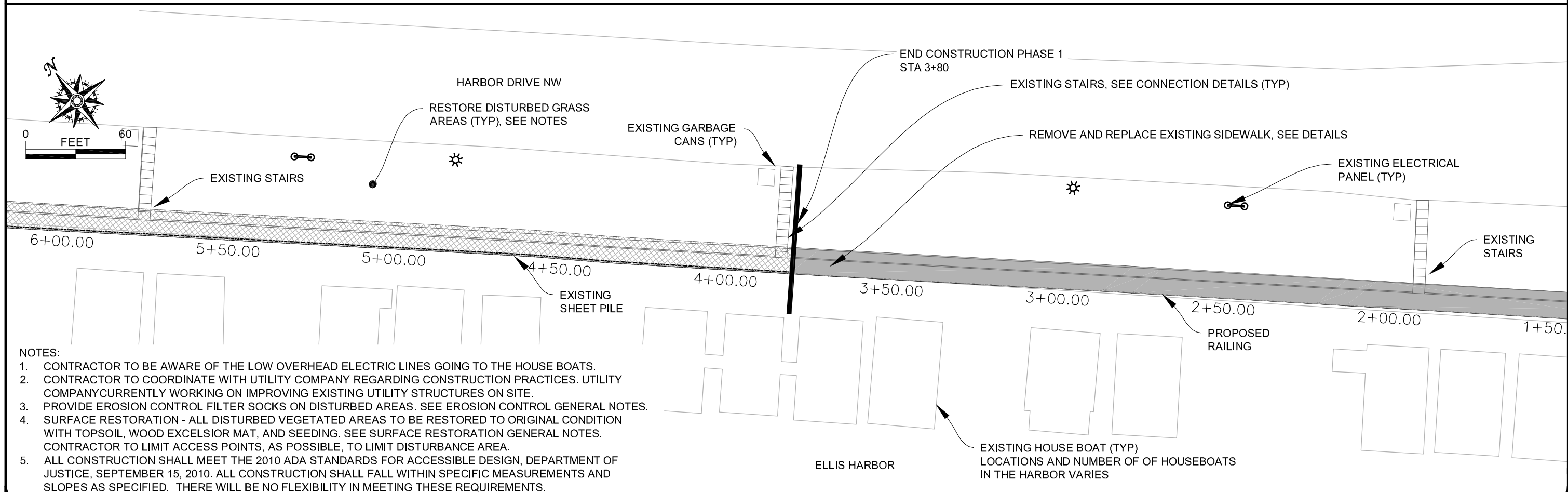
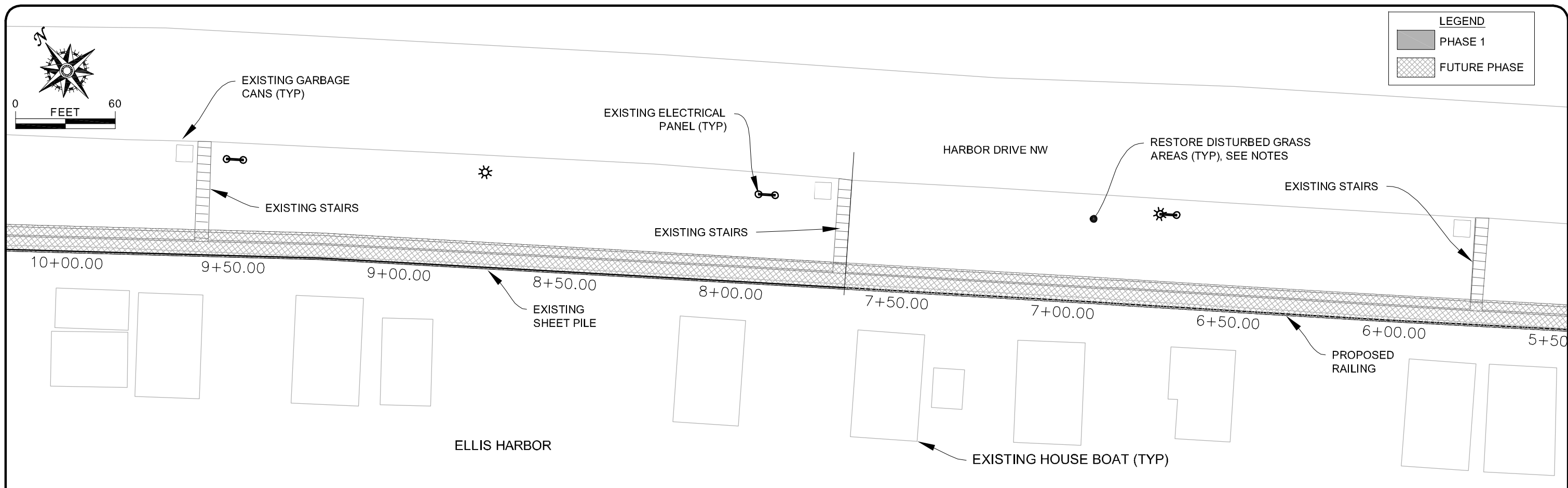
ESTIMATED PROJECT QUANTITIES

BID ITEM NO.	STANDARD ITEM NO.	ITEM DESCRIPTION	UNITS	QUANTITY
1	01100-01	Mobilization	LS	1
2	01300-11	Filter Socks	LF	400
3	01400-10	Removal of Existing Pavements, Driveways, Curb, and Gutter	SY	338
4	02000-01	Unclassified Excavation and Embankment	CY	35
5	02000-40	Dispose Unclassified Excavation and Embankment Off-site	CY	35
6	02100-20	Subgrade Stabilization with Crushed Rock Material	CY	50
7	02100-35	Engineering Fabric for Subgrade Stabilization, Geogrid	SY	100
8	02100-50	Granular Subbase, Clean 1/2" , 2 INCH Thick	CY	20
9	02100-50	Granular Subbase, Clean 3-4" , 24 INCH Thick	SY	250
10	02600-50	Cast-In Place Concrete, Stairs Landing	EACH	2
11	02700-70	Portland Cement Concrete Sidewalk, Reinforced, 6 INCH	SY	338
12	02700-70	Portland Cement Concrete Sidewalk, 6 INCH, Temporary	SY	5
13	02700-82	Anchor Tie-Back Repairs	EACH	20
14	02900-01	Imported Topsoil	CY	215
15	02900-10	Seeding, Fertilizing, and Mulching	AC	0.5
16	02900-40	Wood Excelsior Mat	SQ	120
17	02950-20	Railing, 2 1/2" Steel Pipe, Powder Coated Finish	LF	324
18	02950-30	Gate, 2 1/2" Steel Pipe, Powder Coated Finish	EA	14

ESTIMATE REFERENCE

BID ITEM NO.	STANDARD ITEM NO.	ITEM DESCRIPTION	NOTES
1	01100-01	Mobilization	Mobilization. Contractor shall close work areas during construction.
2	01300-11	Filter Socks	Item is for erosion control of disturbed slopes/grass areas. Measurement shall be plan quantity.
3	01400-10	Removal of Existing Pavements, Driveways, Curb, and Gutter	Item is for removal of 380 lineal feet of existing sidewalk as shown in the existing harbor sidewalk detail. Existing sidewalk is reinforced. Sawcutting is incidental. Measurement shall be plan quantity.
4	02000-01	Unclassified Excavation and Embankment	Measurement shall be plan quantity.
5	02000-40	Dispose Unclassified Excavation and Embankment Off-site	Measurement shall be plan quantity.
6	02100-20	Subgrade Stabilization with Crushed Rock Material (Contingency)	Measurement by Engineer.
7	02100-35	Engineering Fabric for Subgrade Stabilization, Geogrid (Contingency)	Measurement by Engineer.
8	02100-50	Granular Subbase, Clean 1/2" , 2 INCH Thick	Subbase material shall be under sidewalk.Measurement shall be plan quantity.
9	02100-50	Granular Subbase, Clean 3-4" , 24 INCH Thick	Subbase material shall be under sidewalk.Measurement shall be plan quantity.
10	02600-50	Cast-In Place Concrete, Stairs Landing	Item is for construction of lower level stair landings to match new sidewalk. Removal of the existing lower level stair landings is incidental. Measurement shall be plan quantity.
11	02700-70	Portland Cement Concrete Sidewalk, Reinforced, 6 INCH	Item is for 380 lineal feet of 8 foot wide reinforced sidewalk from Sta 0+00 to Sta 3+80. Expansion material is incidental to this item. Measurement shall be plan quantity.
12	02700-70	Portland Cement Concrete Sidewalk, 6 INCH, Temporary	Item is for 5 lineal feet of non-reinforced temporary sidewalk to match existing sidewalk at the end of the project limits. Provide expansion joint at connections to existing and new sidewalk. Measurement shall be plan quantity.
13	02700-82	Anchor Tie-Back Repairs	Item for materials and installation of anchor support bar repairs as shown in the Plan Details. Measurement by Engineer.
14	02900-01	Imported Topsoil	Item is for restoration of disturbed areas. Measurement shall be plan quantity.
15	02900-10	Seeding, Fertilizing, and Mulching	Item is for restoration of disturbed areas. Measurement shall be plan quantity. Watering is incidental. Seeding shall be Type 1A, Lawn Mixture, Sunny Conditions.
16	02900-40	Wood Excelsior Mat	Mat shall be for slope protection after seeding. Measurement shall be plan quantity.
17	02950-20	Railing, 2 1/2" Steel Pipe, Powder Coated Finish	Item is for 2 1/2" x 2 1/2" Steel Railing per SUDAS Section 9080 Safety Rail, see plan details. Includes railing, posts, mounting hardware, powder coat finishing, and installation. Color of powder coat to be selected by Owner. Measurement by Engineer.
18	02950-30	Gate, 2 1/2" Steel Pipe, Powder Coated Finish	Item is for 2 1/2" x 2 1/2" Steel Gates matching the railing, see plan details. Gates will be located at each boat dock location. Includes gate railing, posts, mounting hardware, hinges, stop, powder coat finishing, and installation. Color of powder coat





- NOTES:**
1. CONTRACTOR TO BE AWARE OF THE LOW OVERHEAD ELECTRIC LINES GOING TO THE HOUSE BOATS.
 2. CONTRACTOR TO COORDINATE WITH UTILITY COMPANY REGARDING CONSTRUCTION PRACTICES. UTILITY COMPANY CURRENTLY WORKING ON IMPROVING EXISTING UTILITY STRUCTURES ON SITE.
 3. PROVIDE EROSION CONTROL FILTER SOCKS ON DISTURBED AREAS. SEE EROSION CONTROL GENERAL NOTES.
 4. SURFACE RESTORATION - ALL DISTURBED VEGETATED AREAS TO BE RESTORED TO ORIGINAL CONDITION WITH TOPSOIL, WOOD EXCELSIOR MAT, AND SEEDING. SEE SURFACE RESTORATION GENERAL NOTES. CONTRACTOR TO LIMIT ACCESS POINTS, AS POSSIBLE, TO LIMIT DISTURBANCE AREA.
 5. ALL CONSTRUCTION SHALL MEET THE 2010 ADA STANDARDS FOR ACCESSIBLE DESIGN, DEPARTMENT OF JUSTICE, SEPTEMBER 15, 2010. ALL CONSTRUCTION SHALL FALL WITHIN SPECIFIC MEASUREMENTS AND SLOPES AS SPECIFIED. THERE WILL BE NO FLEXIBILITY IN MEETING THESE REQUIREMENTS.

